

“See What We Do”

**STONEBRIDGE SUSTAINABILITY SOLUTIONS, INC. (SSSI)
GOLD SEAL INDUSTRIES, LLC (GSI)**



*“Advanced Waste Conversion Technology, which through
Collaboration, provides Alternative Solutions to
Environmental Protection, Restoration, and
Resiliency Goals”*



Target Customers

- Military Base
- Municipalities (Cities, Counties, etc.)
- Southern Nevada Water Authority
- Landfills/Waste Disposal
- Waste Water Treatment Facilities
- Agriculture Manure
- Tires
- Forestry Biomass
- Recycling Facilities
- Major Hotels/Casinos
- Indian Reservations
- Manufacturing
- Universities
- Hospitals
- Coal Mines





Feedstock Diversity

Works best when the input waste is carbon-rich:

- Municipality Solid Waste (MSW) / Refuse
 - Cooking Oils & Grease
- Medical Waste, Bio-hazardous and Pharmaceuticals
 - Paper / Cardboard
- Coal, Petroleum Sludge, Oils, Oil Sands
 - Wood, Yard Waste, Biomass,
- Construction & Demolition Materials, Mattresses & Furniture
 - Tires / Rubber / Plastics / Textiles
- Automobile Shredder Residue (ASR) or Auto fluff
 - Sewage & Sludge Treatment
- Agricultural Wastes, Plant Stock, Manure
- Commercial & Industrial Waste, Chemical Waste
- Environmental Remediation, Soil, Surface & Groundwater
 - Brownfield Sites & Redevelopments

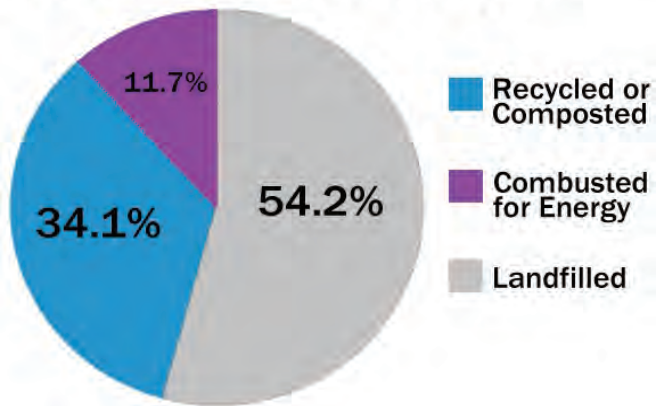




Landfills



What Happens to Stuff We Throw Away*?



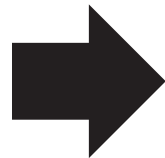
“No trash is sent to Landfills and/or Incinerators”

*Based on the 2010 Municipal Solid Waste Characterization Report



Zero Landfills

Gold Seal Industries System





Distilled Water System

Gold Seal Industries

“ Highest Purity - Distilled Water ”

MODULAR EVAPORATOR

1 Million Gallons Per Day

Water recovered can be used
for clean-in-place procedures





Recovery System



CONTINENTAL BIOMASS INDUSTRIES, INC.
World's Best Portable and Stationary
Waste Recovery Systems

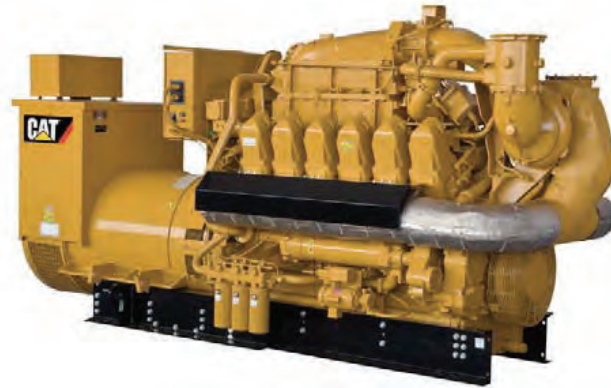




Combined Heat and Power (CHP)

GE Jenbacher and/or Caterpillar CHP

These units produce Electricity and Hot Water and/or Steam.





Fuel Cell Technology

Gold Seal Industries is working with Fuel Cell Manufactures to operate units on syngas

Solid Oxide Fuel Cell (SOFC)

- system efficiency – up to 90%
- system availability – >95%
- durability – 10-year cell stack life





MSW Environmental

- Status: Feedstock: 500 tons per day (260 days per year) of MSW, C&D, Yard Waste, Animal Waste and Tires





C&D Debris

Construction and Demolition





Medical & Pharmacy Waste





Medical Waste



30 Gallon Red Bag Box
Lid and Dolly Base

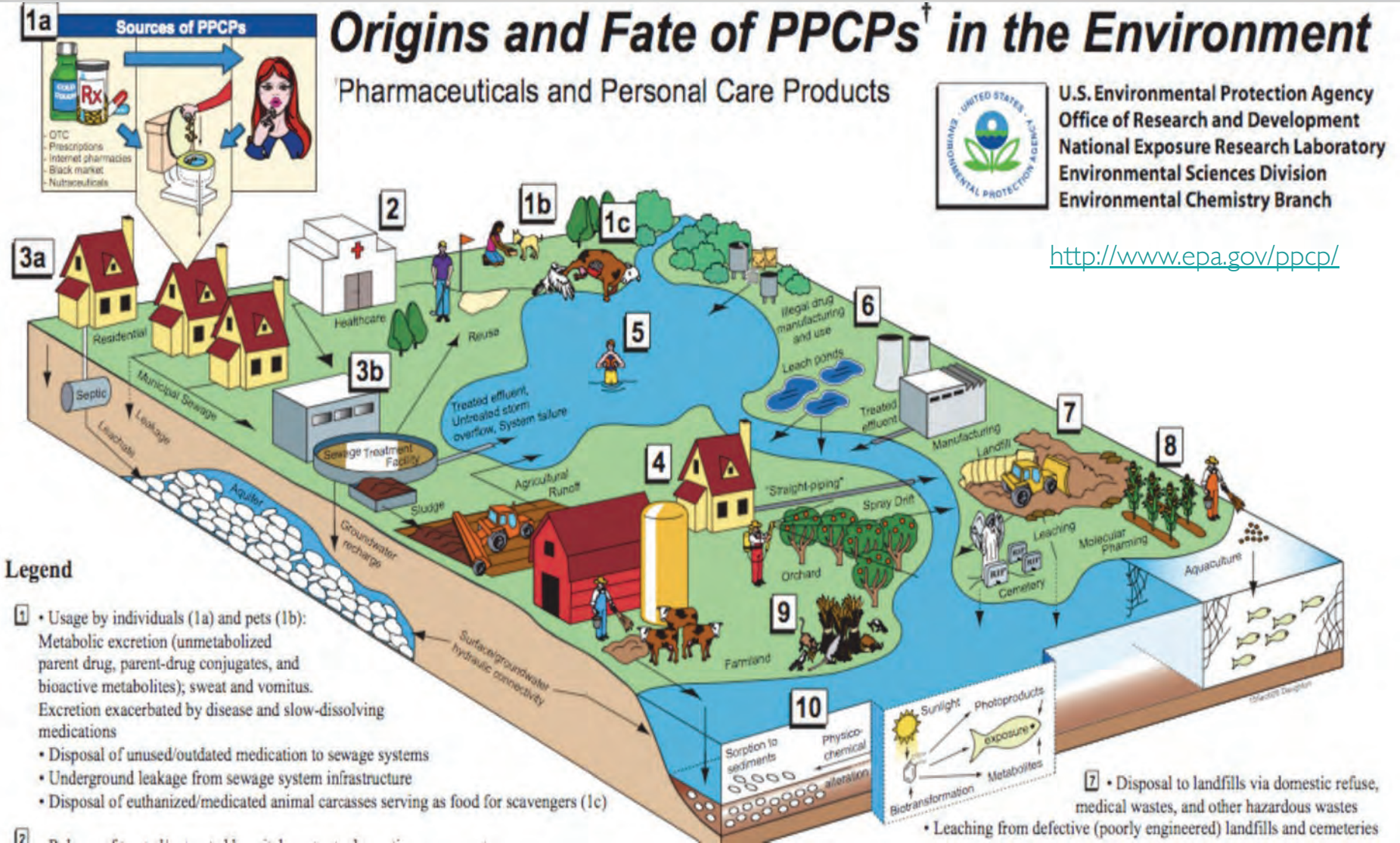


Biomedical Waste Management



Dispose of your sharps and red bag waste
 Save Money - monthly fees - cost-effective
 Make Facility Safer
 Make Your Waste Disposal Simpler
 Secure Your Confidence in a Proven Technology
 Liability associated with waste - even years after the fact







Stonebridge Sustainability Solutions Inc.

MSW Leachate

60% of Weight is Contaminated Water

- **Transportation Cost**

- **Tipping Fees** (\$250.00 Per Truck Load)



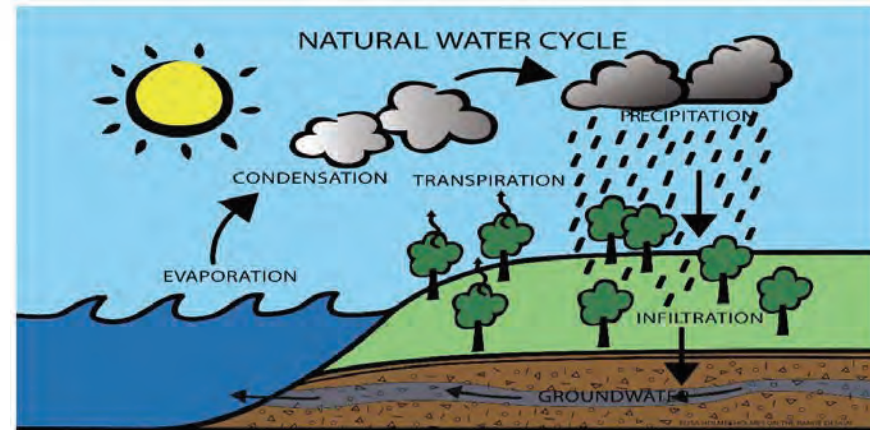
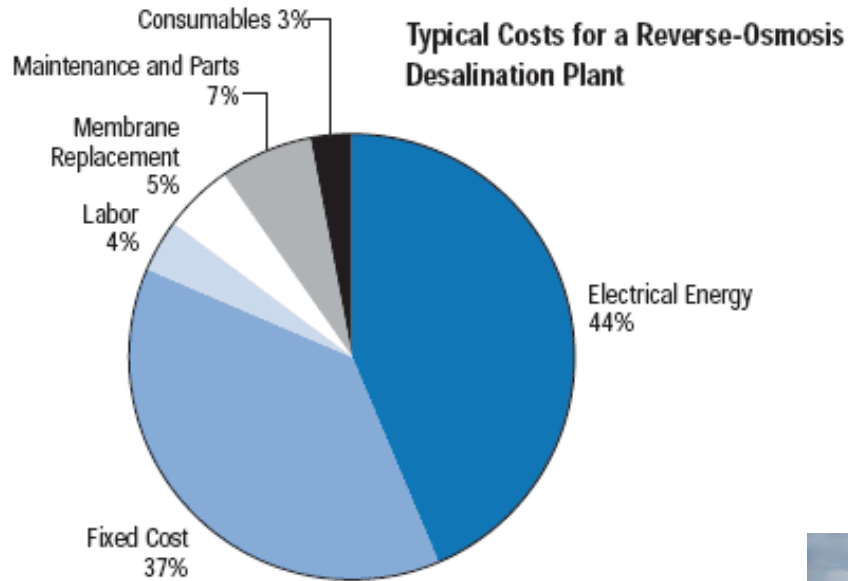
Converted to Clean Safe Drinkable Water



Stonebridge Sustainability Solutions Inc.

Desalination

Removal of Salts and Minerals



LIVING WITH TRINITY Major funding provided by The Meadows Foundation and The Dixon Water Foundation. TrinityRiverTexas.org KERA UNT





Stonebridge Sustainability Solutions Inc.

Sewage & Sludge





Stonebridge Sustainability Solutions Inc.

Environmental Remediation



(\$250.00 Per Truck Load)



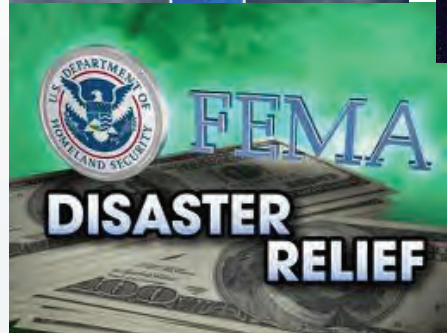
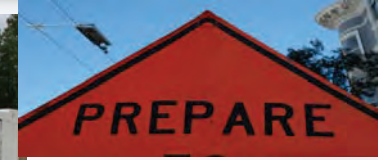


Military Applications





Disaster Applications



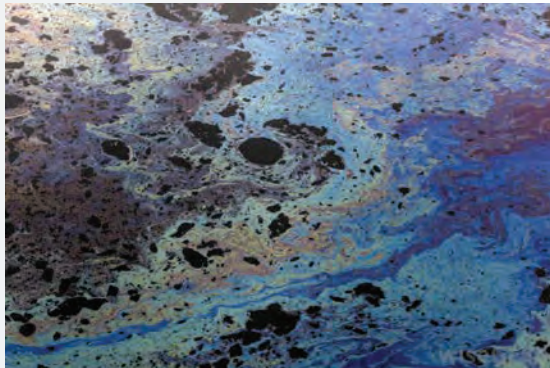


Used Oil & Grease





Oil & Gas Industry





Ships and Tanks





Stonebridge Sustainability Solutions Inc.

Oil & Gas Wells





Stonebridge Sustainability Solutions Inc.

Oil Sands Bitumen



Tailing (TAR) Ponds

Typical breakdown is:

- Sand 83%
- Bitumen 10-12 %
- Water 4%
- Clay 3%





HYDRAULIC FRACTURING

Elimination of all type of chemicals and fluids

- Our oilfield service company focused on the safe, efficient, cost effective disposal of hydraulic “fracking slurry or Frac Slurry”.
- Waste contains harmful pollutants including salts, organic hydrocarbons (oils, grease and tar composites), inorganic and organic materials.
- NORM the naturally occurring “Radioactive” material can’t be eliminated



Increase the evaporation process





Biomass

Organic Compounds:

- **Vinasse**
- **Liquid Stillage**
- **Bagasse**
- **Leafs, rice hulls**
- **Other Green Waste**
 - **Palm Cuttings**
 - **Plant Stock & Crop Residue**



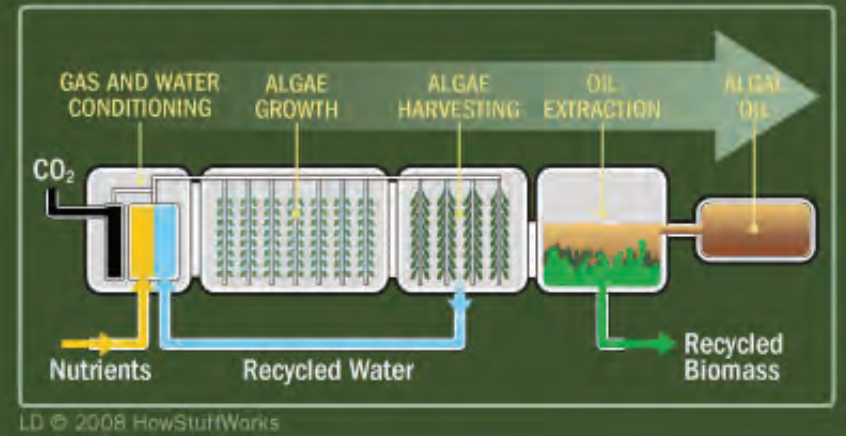


Stonebridge Sustainability Solutions Inc.

Algae



How Algae Biodiesel Works Bioreactor Process





Stonebridge Sustainability Solutions Inc.

Wood-Biomass





Stonebridge Sustainability Solutions Inc.

Wood-Biomass

Energy Conversion



Thinning Piles



Bark



Saw Mill



Logs



Wood Chips





Manure Project





Stonebridge Sustainability Solutions Inc.

Animal Manure



How Much Manure Do Animals Produce?

A 1,400-pound dairy cow produces about 22 tons of manure annually, while a 375-pound sow and its litter produce about four tons.

Approximate Annual Manure Production

Animal Type/Size		Manure Production	
Animal (Type)	Size (lbs.)	Manure (lbs./day)	Manure (tons/year)
Cattle			
Dairy cattle	500	43	7.8
	1,400	120	21.9
Beef cattle	750	45	8.2
	1,250	75	13.7
Swine			
Finishing pig	150	8.8	1.8
	200	13.1	2.4
Sow and litter	375	22.5	4.1
Poultry			
Layers	4	0.21	0.038
Broilers	2	0.14	0.026

Sources: Midwest Plan Service, University of Wisconsin-Extension





Tire Fires





Tire Project

400 tons per day of Shredded Tires

12,000,000 tons per year
(approximately used automobile and commercial tires)

Produces:

Synthetic Diesel – 12,000,000 gallons per year





Ohio Coal Project

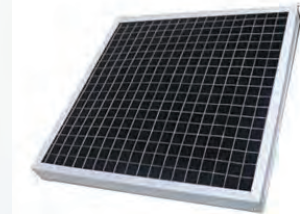
Coal Fines or Tailings

.The unit will operate 7 days per week for a minimum of 350 days per year

Annual Input/Output:

Feedstock – 351,000 tons per year
Synthetic Diesel Produced – 10,225,352 gallons per year
360,000 tons of carbon dioxide will be captured per year

All coal is processed at the mine and the Biochar can be returned as part of the land reclamation program. Liquid fuels are shipped from the mine by rail on tanker cars or trucks.





Stonebridge Sustainability Solutions Inc.

Island Fairies





Ocean Plastic



Third Party Review

SOENECS
Innovative Sustainable Solutions

Social, Environmental & Economic Solutions (SOENECS) Ltd
Technology Report for Albion Energy



NEW TECHNOLOGY REVIEW

Author: Dr. David Greenfield
February 2017

It is the view of SOENECS that the Electromagnetic Induction Gasification System (EIGS) has the potential to revolutionize the way that difficult wastes can be managed in an appropriate, localized and optimal way, according to their individual chemical and physical composition.



Insurance

Lloyd's

The world's specialist insurance market for over 325 years
The world's leading insurance platform



**“Operational
Performance Guarantee -
Worldwide up to 120% of
Total Equipment Cost”**

Underwriting since 1688

LLOYD'S
LLOYD'S OF LONDON